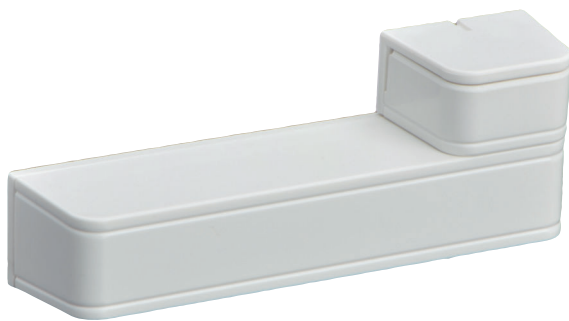


RADION contact SM

www.boschsecurity.com



BOSCH
Invented for life



- ▶ Internal magnetic reed switch contact
- ▶ Supervised for low-battery, cover-tamper, and removal from mounting surface tamper conditions
- ▶ Operational up to 5 years using a single, user replaceable Lithium AAA battery

RADION wireless security solution from Bosch provides the range, scalability and exceptional battery life required to ensure reliable performance and superior quality. Advanced diagnostics and multiple device enrollment options make installation and maintenance simple and cost effective. With a complete line of peripherals, RADION provides the flexibility for virtually any application requirement.

System overview

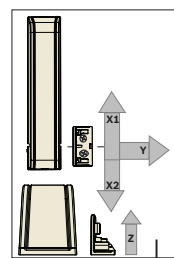
RADION contact SM provides a magnetic reed switch contact for monitoring doors and windows. The internal reed contact is activated by an external magnet assembly which can be placed on either side of the transmitter. It also has a built-in wall and cover tamper switch that transmits a tamper signal when someone removes the device from its base or pulls away from the wall.

Functions

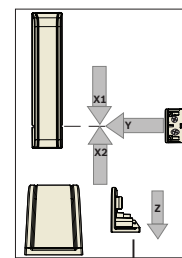
Reed Contacts

There is a reed contact on either side of the device, so the magnet assembly can be mounted within 20 mm (0.78 in) of the device on either side. When the distance between the magnet and the internal reed

switch of the contact exceeds 20 mm (0.78 in), an alarm signal is sent to the receiver, and from there, to the compatible control panel.



	Y	20.0 ± 4.0 mm (0.79 ± 0.16 in)
	X1	13.0 ± 3.0 mm (0.51 ± 0.12 in)
	X2	15.5 ± 4.5 mm (0.61 ± 0.18 in)
	Z	23.0 ± 5.0 mm (0.91 ± 0.13 in)
	Y	14.0 ± 7.0 mm (0.55 ± 0.28 in)
	X1	13.0 ± 5.0 mm (0.51 ± 0.13 in)
	X2	14.0 ± 6.0 mm (0.55 ± 0.24 in)
	Z	21.5 ± 1.5 mm (0.85 ± 0.06 in)



	Y	19.0 ± 4.0 mm (0.75 ± 0.16 in)
	X1	12.0 ± 3.0 mm (0.47 ± 0.12 in)
	X2	14.5 ± 4.5 mm (0.57 ± 0.18 in)
	Z	22.0 ± 5.0 mm (0.87 ± 0.13 in)
	Y	13.0 ± 7.0 mm (0.51 ± 0.28 in)
	X1	12.0 ± 5.0 mm (0.47 ± 0.13 in)
	X2	13.0 ± 6.0 mm (0.51 ± 0.24 in)
	Z	20.5 ± 1.5 mm (0.81 ± 0.06 in)

Certifications and approvals

Region	Certificate
US	UL 634 Connectors and Switches for use with Burglar Alarm Systems

Region	Regulatory compliance/quality marks	
Germany	VdS	H116003 [AMAX 2100/3000, RFRC-OPT, RFUN, RFDW-RM, RFDW-SM, RFPR-12, RFDL-11, RFKF-TB, RFKB-FB]
Europe	CE	EMC, LVD, R&TTE, RoHS [RFDW-SM]
	EN50131	EN-ST-000160 [RFDW-SM]
Belgium	INCERT	B-509-0072 [RADION RFDW-RM, RFDW-SM]
Russia	GOST	TC N RU Д-НЛ.МН09.В.00334 EAC
USA	UL	20121218-BP8028 [RFDW-SM-A, RFDW-RM-A]
	CSFM	7272-1615:0249 [RFSM-A]
	FCC	Part 15 Security/Remote Control Transmitter 433.42 MHz
Canada	IC	1249A-RWSSFT [RFDW-SM-A, RFDW-RM-A, RFBT-A, RFUN-A, RFKF-A, RFRP-A, RFPR-12-A, RFPR-C12-A, RFSM-A, RFPB-TB-A, RFPB-SB-A, RFKF-FB-A, RFKF-TB-A, RFIN-A, RFGB-A]
France	AFNOR	2120200022A0 RFDW-SM
China	CCC	2013031901000110 [RFDW-SM-CHI]
Brazil	ANATEL	2798-13-1855 [RFDW-SM-A]

Installation/configuration notes

Mounting Considerations

Mount the transmitter on an interior door or window frame, and the magnet assembly on the interior of the moving portion of the door or window. Ensure that the transmitter is protected from weather elements such as extreme temperatures, humidity, rain or snow.



Notice

Installation on metal surfaces can affect the RF propagation pattern of the radio transceiver.

Installing the plastic magnet cover flush against the door or window will prevent possible damage to the plastic magnet cover.

Technical specifications

Properties

Dimensions: Transmitter	19.5 mm x 82.55 mm x 12.8 mm (0.76 in x 3.25 in x 0.50 in)
Dimensions: Magnet	18.5 mm x 24.5 mm x 12.5 mm (0.72 in x 0.97 in x 0.49 in)
Weight:	0,073 kg (0.160 lb)

Power

Power/Voltage:	1.5 VDC
Battery type:	AAA Lithium
Battery life:	Up to 5 years Upon power-up, factory test mode lasts approximately 10 sec.

Environmental Considerations

Temperature:	Functional range: -10° C to +55° (+14° F to +131° F) UL only: 0° C to +49° C (+32° F to +120° F) EN 50130-5 Class II only: -10° C to 55° C (+14° F to +131° F) IP30/IK04
Environment	Complies with EN50130-5 Class II
Relative Humidity:	Up to 93% non-condensing
Cover and Wall Tamper Switch ¹ :	Transmits a tamper switch signal when the detector is removed from its base, or the unit is pulled away from the ceiling.
Frequency:	433.42 MHz
Use:	Intended for indoor use.

¹After factory test mode, this detector is operational.

Ordering information

RFDW-SM-A Wireless surface mount contact

For use in North and South America
Order number **RFDW-SM-A**

EWE-DECTER-IW 12mths wrty ext detector general

12 months warranty extension
Order number **EWE-DECTER-IW**

RFDW-SM Wireless surface mount contact

For use in Europe, Africa, and Australia.
Order number **RFDW-SM**

EWE-DECTER-IW 12mths wrty ext detector general

12 months warranty extension
Order number **EWE-DECTER-IW**

RFDW-SM-CHI Wireless surface mount contact

For use in China only.
Order number **RFDW-SM-CHI**

EWE-DECTER-IW 12mths wrty ext detector general

12 months warranty extension
Order number **EWE-DECTER-IW**

Accessories

RFAC-DW-10 Spacer for RADION contact, 10pcs

Package of 10 base spacers and 10 magnet spacers for RADION Door/Window surface mount contacts.

Order number **RFAC-DW-10**

Represented by:

Europe, Middle East, Africa:
Bosch Security Systems B.V.
P.O. Box 80002
5600 JB Eindhoven, The Netherlands
Phone: + 31 40 2577 284
emea.securitysystems@bosch.com
emea.boschsecurity.com

Germany:
Bosch Sicherheitssysteme GmbH
Robert-Bosch-Ring 5
85630 Grasbrunn
Germany
www.boschsecurity.com

North America:
Bosch Security Systems, LLC
130 Perinton Parkway
Fairport, New York, 14450, USA
Phone: +1 800 289 0096
Fax: +1 585 223 9180
onlinehelp@us.bosch.com
www.boschsecurity.us

Asia-Pacific:
Robert Bosch (SEA) Pte Ltd, Security Systems
11 Bishan Street 21
Singapore 573943
Phone: +65 6571 2808
Fax: +65 6571 2699
apr.securitysystems@bosch.com
www.boschsecurity.asia